



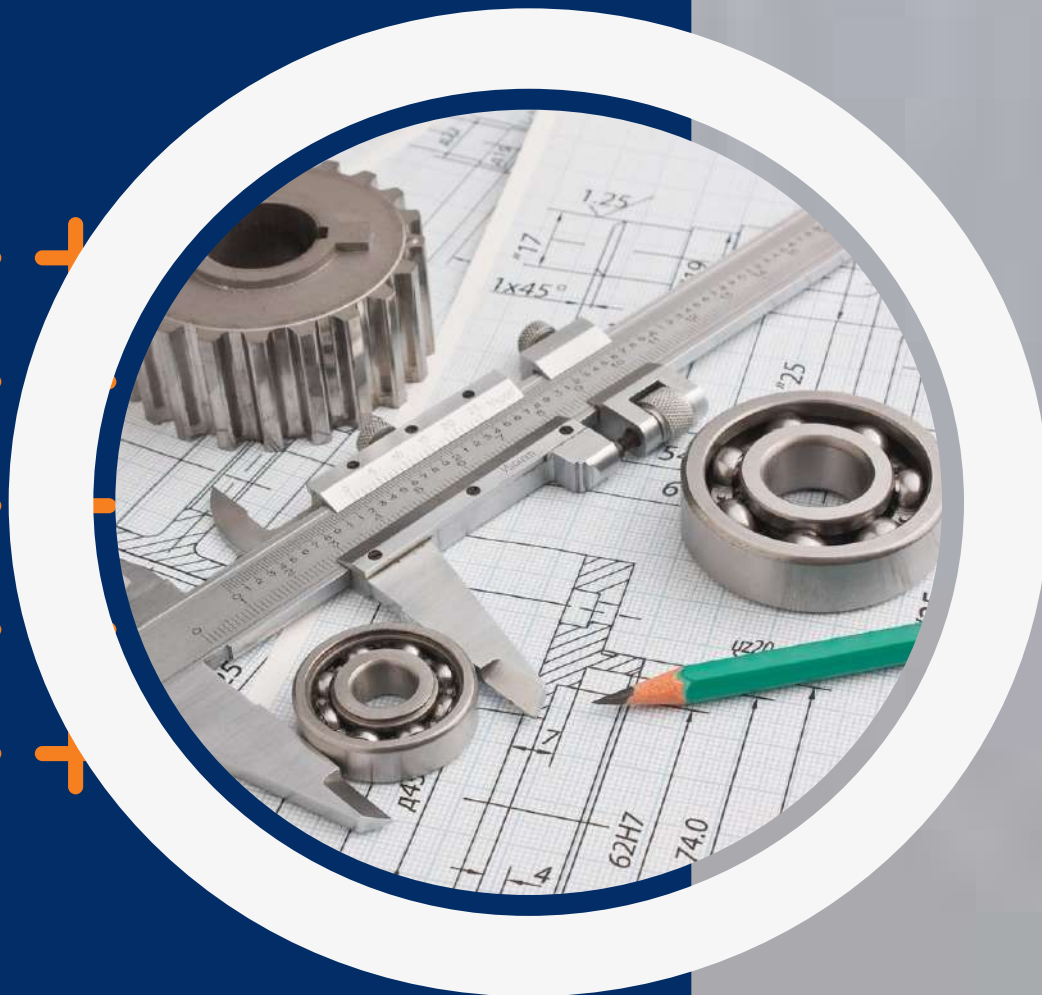
**SHREE BALAJI
ENGINEERS**

SHREE BALAJI ENGINEERS (A Jhalani Group company) established in 1998 is a reputed and leading “precision manufacturer” in INDIA of high quality, critical machine components (ferrous, non-ferrous metals and many special alloys) for Automobile, Railways, Electrical & Traction industries to name a few.

At “**SBE**” we are fully committed to serve such diverse critical “engineered to order” (ETO) machining needs of sectors like Oil & Gas, Petrochemical, Power generation, Fasteners, Turbo machinery, Fire & safety, Water treatment, Instrumentation, Semiconductors, Aerospace, Environmental etc. also.

We are financially strong having massive growth, requiring us to expand our operations in to 3 modern Manufacturing facilities in Madhya Pradesh, Central India.

Our goal is also to establish our strong presence in the international market also by joining hands with potential Partners on long-term basis.



MISSION & VISION



Mission

- To provide consistently high-quality products with competitive price, fast delivery to assure customer's trust and satisfaction and thus to establish a successful long-term relationship with our customers and business partners.
- To offer strategic and engineered business solutions for solving customer's problems and their requirements.
- To maintain our status as a top-quality supplier and solution provider conforming to international standards and EHS mandates.

Vision

- To be an organization which is the first choice both for our customers, vendors, stake holders and employees.
- To secure the leadership position in India in our valued business field.
- To establish a trusted and qualitative presence in Overseas markets through win-win partnerships.



Made to order precision parts manufacturing solutions to suit OEM's critical requirements.

BRAND PROMISE



We are driven by “value-added partnering” principle in order to create value, solve problems and innovate for our customers. We will always do what it takes, going beyond, doing that extra for their success.

Our promise is an integral part of our working culture. Integrity and transparency are its wings.

Our expertise of engineering solutions along with our competence and infrastructure capabilities which are blended with our engagement is the key, in making solutions work for our customers.

Its not only about product delivery but also being there for our customers and their needs in order to resolve issues and securing success. We keep demonstrating our spirit across situations.



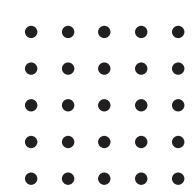
Ontime consistent delivery performance. Efficient production program & capacities

PATHWAY TO OUR GOAL



- ✓ Ensuring defect free products even to a precision of required microns.
- ✓ Commitment to delivering on time, every time. Innovation and improvisation.
- ✓ Continual Improvement in all QMS Processes.
- ✓ Efficient and optimum resource utilization.
- ✓ Employee training, motivation and participation.
- ✓ Complying to all legal & applicable product specifications and mandates.
- ✓ Our Quality management system, with accountability for the quality objectives.
- ✓ Understanding & fulfilling the requirements of all interested parties.

Presence all over India now. Strong and quality presence overseas in focus



WHAT WE DO

We are focused on delivering the most reliable engineered to order (ETO) solutions in the market.

Having more than 26 years of CNC precision machining experience, we are the epitome of trust for our discerning OEM customers in unmatched precision and supreme quality in the CNC manufacturing space in India. Our state-of-the-art machines which are all international benchmarks along with our quality assured raw materials and expert manufacturing team, will ensure the superlative precision and mandated quality even at tolerance conforming to the required Microns. Undoubtedly, we have achieved excellence in “precision engineering business” and do commit to maintain it in each and every production batch.

Knowing our company as a family managed business with over 26 years of Engineering Business excellence and thus our world-class CNC machining services have become the popular choice for our industry leading OEM Customers EICHER Motors, TAFE Motors & Tractors Ltd. (TMTL), CG Power and Industrial Solutions Ltd. (CGPISL/Crompton Greaves), Bharat Heavy Electricals Ltd. (BHEL), INDIAN RAILWAYS, MEDHA Traction Equipment Pvt. Ltd. (MTEPL), SAINI Heavy Electricals and Engineering Pvt. Ltd., GOVIK Industries Pvt. Ltd., etc.

Our capabilities range from handling mass production to job production volumes of parts. We have machines of super precision which are international top brands and benchmarks.



Keeping abreast with trends, yet setting trends as well



CORE VALUES

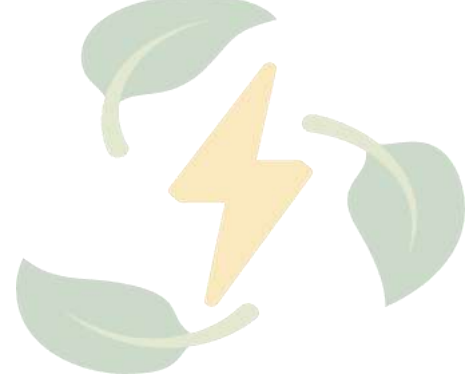
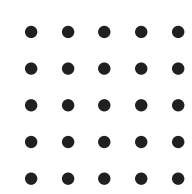


- Technical competence and high professionalism
- Good corporate governance
- Customer First philosophy
- Total Quality Assurance and EHS focus
- Dignified equal opportunity to all concerned

We at SHREE BALAJI ENGINEERS are committed to sustainable growth with a prime focus on customer satisfaction through ethical, transparent and reliable business philosophy. We are fully committed to produce quality products and strive to be competitive, innovative & efficient.



Mutual trust and transparency. Win-win customer relationship all the way



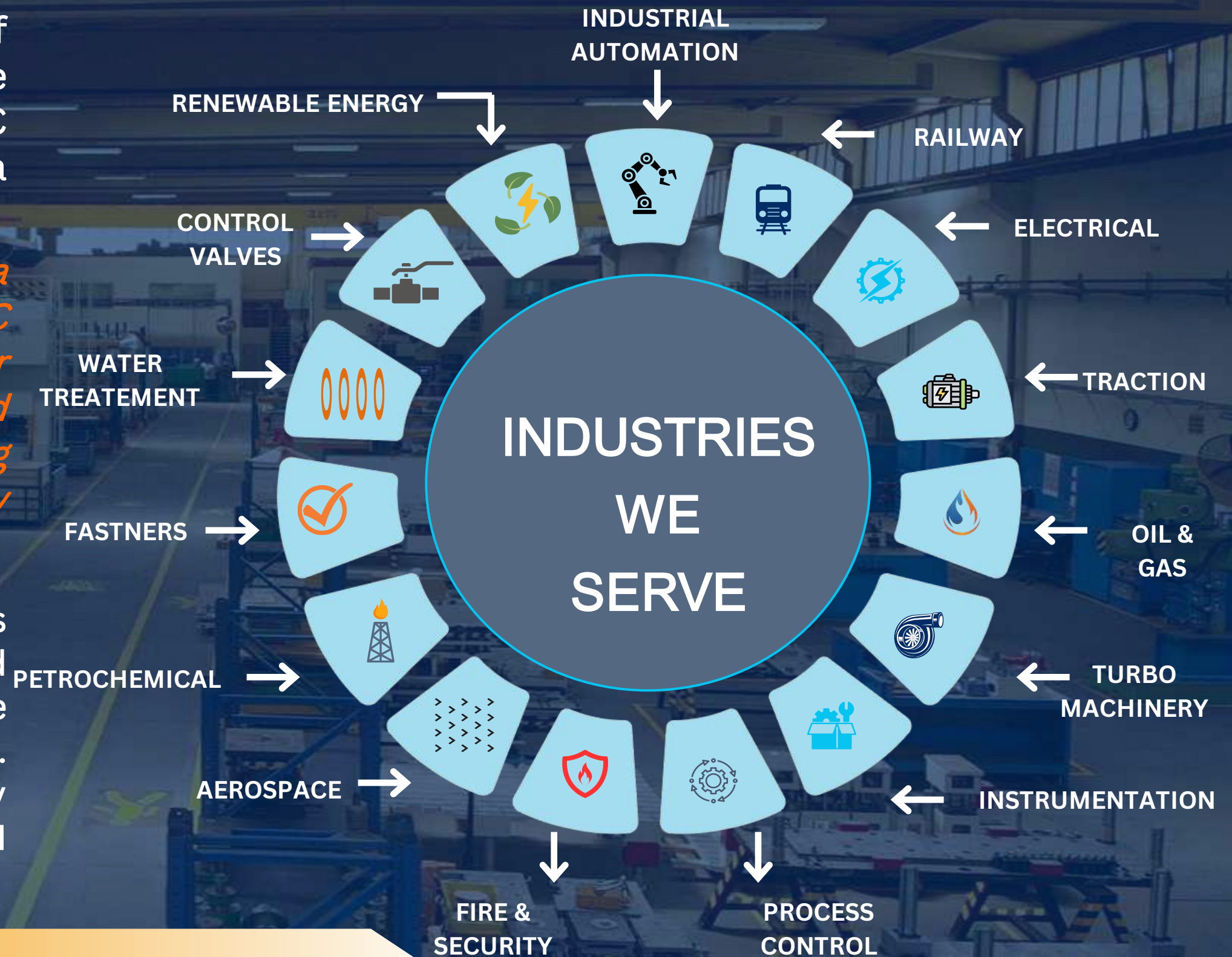
OUR EXPERTISE



We have machined with excellent precision hundreds of critical components for several prestigious OEM-s who are industry leaders in INDIA. Having more than 26 years of CNC precision machining experience, we enjoy all-India leadership position in some private & government sectors.

Thus, currently we hold the leadership position on all-India level, for INDIAN RAILWAYS (for manufacturing the AC & DC Motors' Bearing component Kits) fulfilling 50% of their annual consumption requirement. We are the preferred supplier of precision parts to the MOTOR manufacturing sector in INDIA due to our quality, reliability and delivery performance.

The company manufactures a wide range of CNC multi-axis machined components, turn-mill parts, CNC milled components and precision turned components. We produce our highly trusted products out of a footprint of 56,000 sq. ft. in 3 of our own factories. Additionally we have a fully dedicated manufacturing operation in our prestigious OEM customer's premises (CGPISL) in Bhopal.



Across 5 industrial sectors now. Across 15 sectors envisioned



Our quality management system is in line with all required mandates and our company has accreditations of **ISO 9001:2015** and **ISO 14001:2015**. We also follow principles and best practices as applicable to our business by covering the requirements of **API Q1 9TH Edition** and **ISO 9007:2015** standards. We also periodically review, revise and upgrade our quality management systems.

Our persistent high level of precision is ensured through excellent technology innovations and stringent quality control systems and procedures. These are enhanced by good statistical process control methods.

Our workshop is equipped with the best of measuring equipments, e.g. ZEISS CMMs having continuous scanning software, Mitutoyo programmable height station, height Gauges, Mitutoyo Contractor for contour measurement, PMI for material identification, Hardness Testers, Roughness Testers, Air Gauges, Slip Boxes, Dial Indicators and many more.





- ✓ Implementing and maintaining a documented Quality Management System
- ✓ Statistical Process Control
- ✓ Ensuring continuous training to our employees
- ✓ Motivating and involving all the employees in achieving our overall goals
- ✓ Continual improvement in all areas of QMS Processes
- ✓ Upgrading technology appropriate to the changing needs of the customer and industry



UNIT 01

Shree Balajii Engineers
Plot No. 86 Industrial Area,
Mandideep, Bhopal,
Madhya Pradesh, INDIA
Area- 32,000 sq. feet
Employees -125



UNIT 02

Shree Balaji Engineers
Plot No. 85B Industrial
Area, Mandideep, Bhopal,
Madhya Pradesh, INDIA
Area- 14,000 sq. feet
Employees - 100



UNIT 03

Shree Balajii Engineers
Plot No. 123 Industrial
Area, Mandideep, Bhopal,
Madhya Pradesh, INDIA
Area- 10,000 sq. feet
Employees - 65



OUR MACHINES



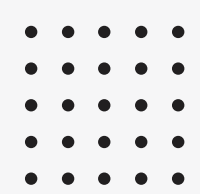
Our state-of-the-art machines are all for resolving customers' universal and discerning machining challenges



OUR MACHINES

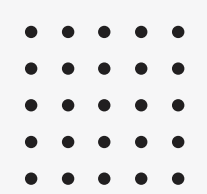


Our ongoing technology upgradation is to keep pace with innovation in engineering mechanics



LIST OF MACHINES

- ✓ **Computerized Numerical Control (CNC) - 28**
- ✓ **Vertical Machining Center (VMC) - 30**
- ✓ **Vertical Turning Lathe (VTL) - 10**
- ✓ **Horizontal Machining Center (HMC) - 6**
- ✓ **Coordinate Measuring Machines (CMM) - 6**

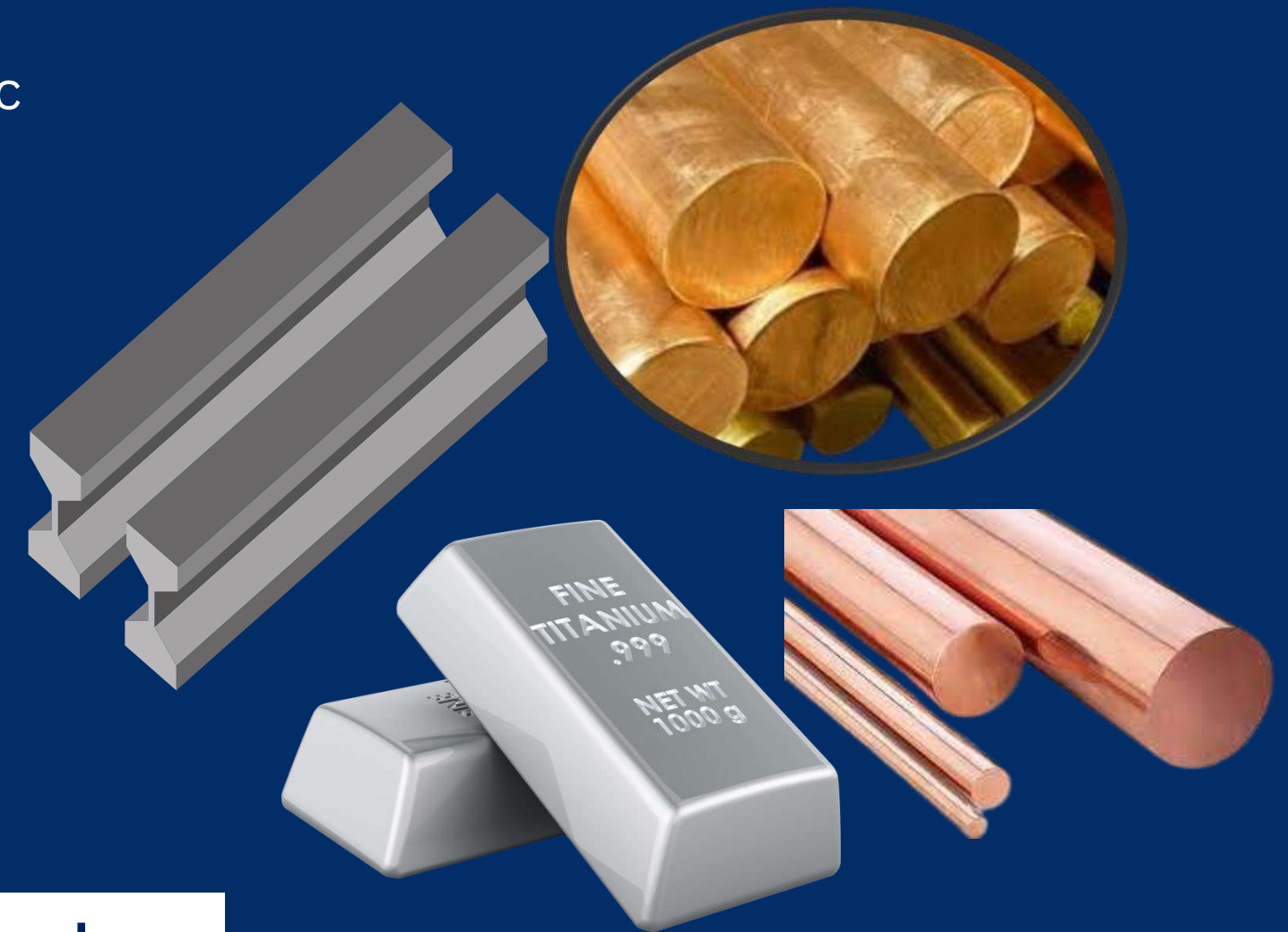


MACHINABLE MATERIALS



WE CAN DO THE MACHINING OF PARTS IN THE FOLLOWING MATERIALS

- **Carbon Steels** - EG: EN1A, EN8, EN16T, EN24T; Grade 8.8, Grade 10.9, Grade 12.9; Durehete 950, Durehete 1055
- **Non-Ferrous** - EG: Aluminium, Bronze (NES 833, NES 834, CA104), Copper, Brass, Phosphor Bronze
- **Stainless Steels** - EG: 303, 304, 316, 317, 410, 416, 431, 17-4Ph, Nitronic
- **Duplex** - EG: UNS 31803, UNS 32750, UNS 32760, 254SMO
- **Titanium** - EG: Grade 2, Grade 5
- **Inconel** - EG: 625, 718, 725
- **Incoloy** - EG: 800, 825, 925
- **Hastelloy** - EG: C22, C276
- **Monel** - EG: 400, K-500



If you have a requirement for any material that isn't listed above, still let us know.

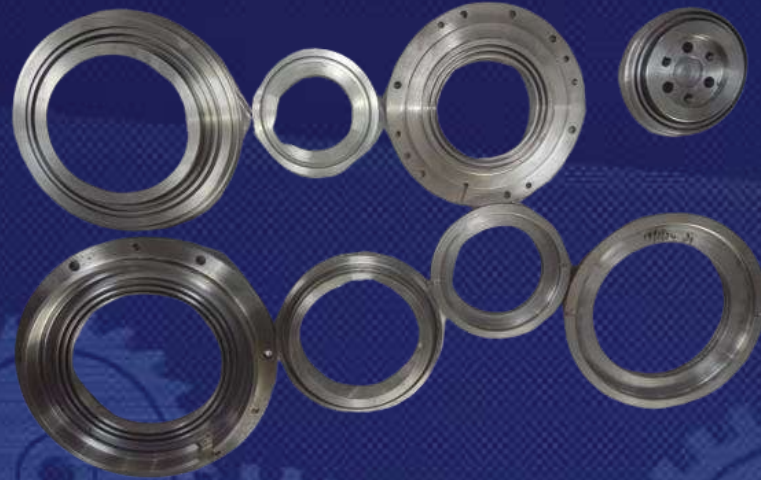
We are proven and ready for challenging machining solutions with hard and tough among the materials.



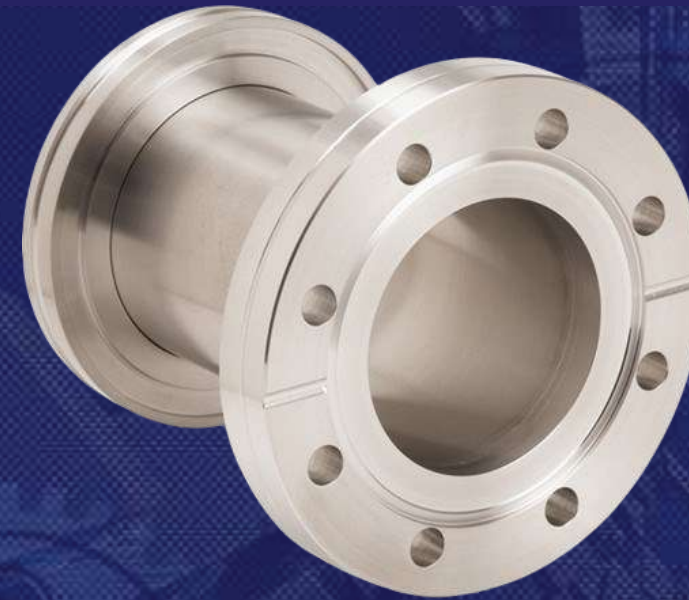
CUSTOM PRODUCTS



WELL HEAD



BEARING COMPONENTS EM7.5KHP



ADAPTOR FLANGES



TRANSMISSION HOUSING COVER



END SHIELD



PLH

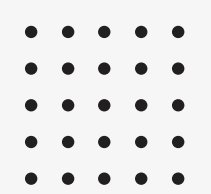


COPPER FLANGES

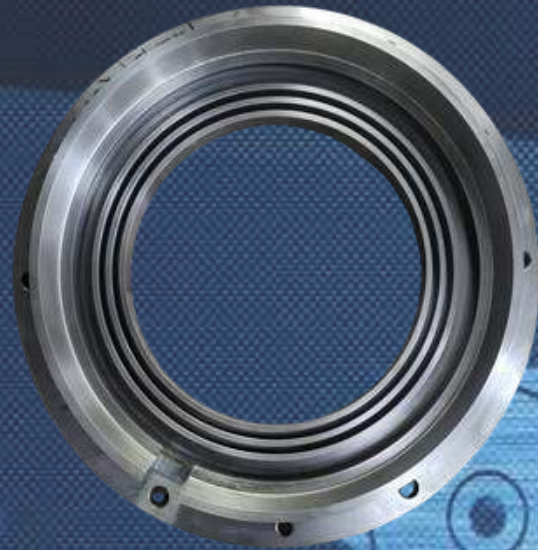


SPEED PROBE

Customer shall define the technical parts' need and we will deliver, whatever be its criticality



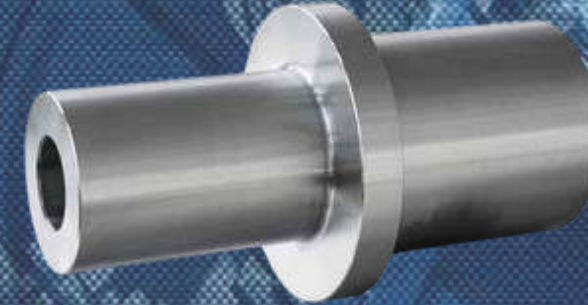
CUSTOM PRODUCTS



OUTER BEARING CAP



NOZZLES



NON STD FORGINGS



WELD NECK



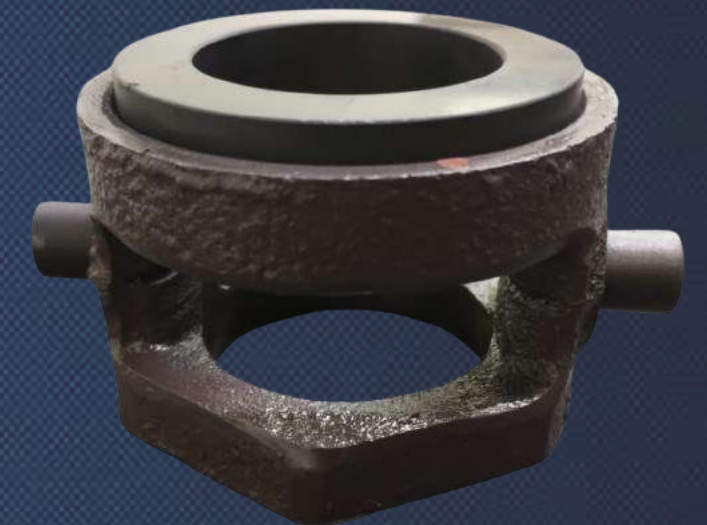
STUDDING OUTLETS



KAPLAN BLADE FOR TURBINE

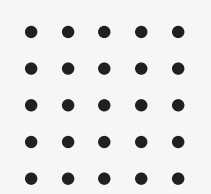


API FLANGES

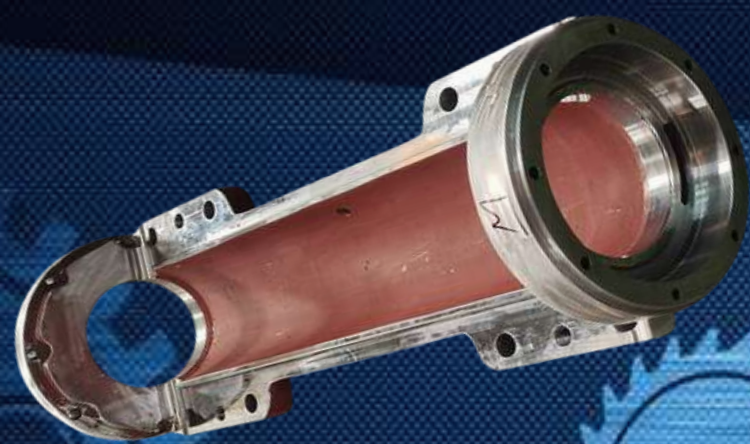


RING HOUSING

Committed in meeting the quality, yet striving to exceed and excel



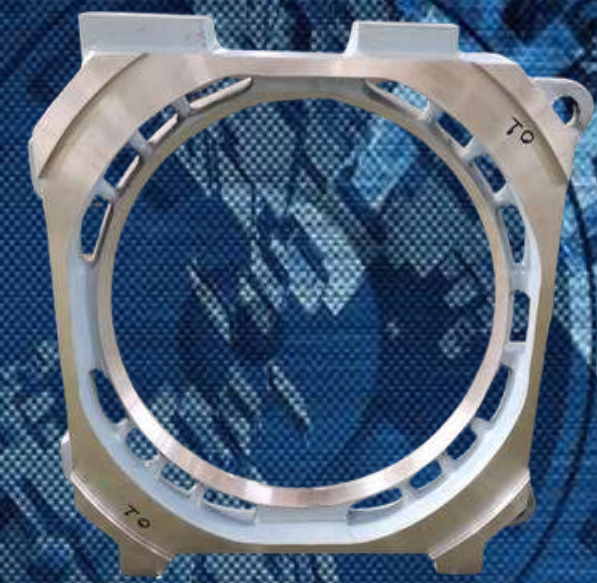
CUSTOM PRODUCTS



SUSPENSION TUBE



REDUCTION COVER



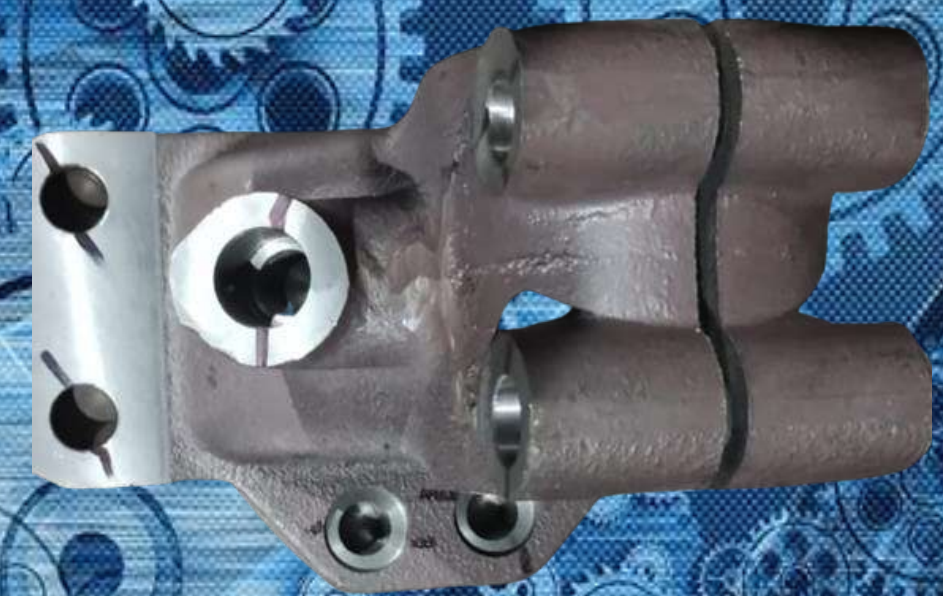
STATOR CHAMBER



GEAR SHIFTER HOUSING



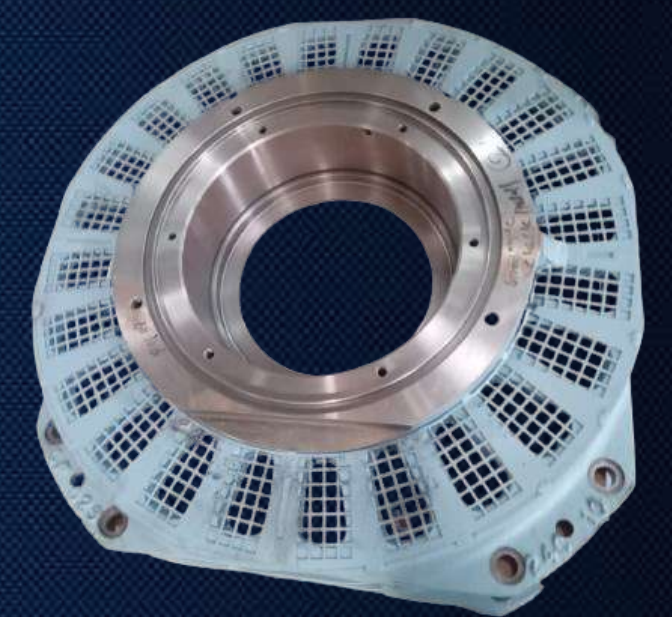
STEERING GEAR SUPPORT



STEERING GEAR SUPPORT

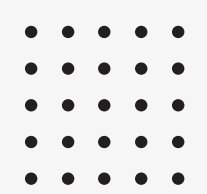


ENDFRAME FOR NON DRIVE SIDE



ENDFRAME FOR DRIVE SIDE

OEM-s' demanding challenges and we machine and resolve

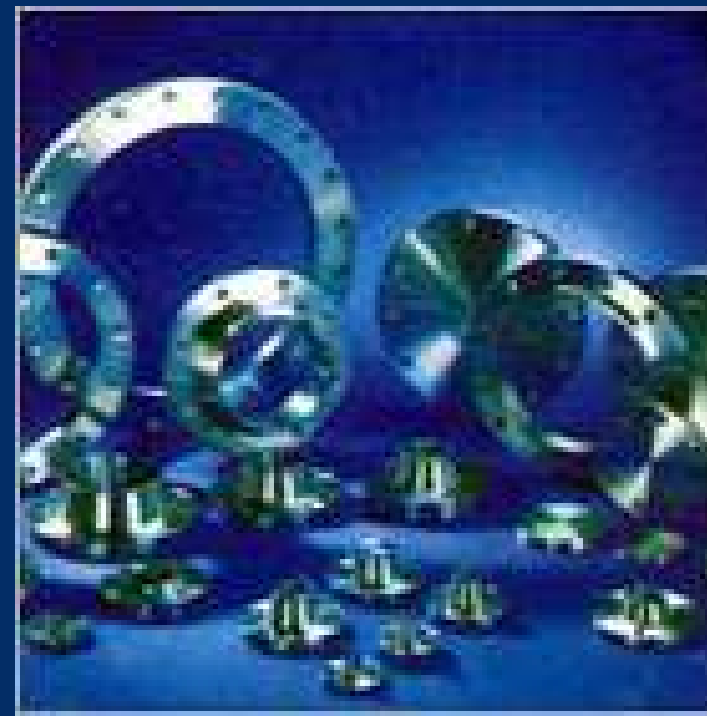


- **FORGED FLANGES** (*Detailed info. in the next page*)
- Spectacle Blind & Fig-8 Flanges Spacer & Paddle
- Christmas tree Equipments: Well Heads, Casing Heads, Tubing Heads, API Flanges, Blocks & Connectors, Ring Joint Gaskets
- Non-standard Forgings: Self Reinforced Nozzles, Rings, Wheels, Tyre Tube Sheets
- Casted, Forged Valve Body and Bonnet
- Forged Rounds / Shafts
- Windmill Gearbox Forgings: Forged Gear Blanks and Shafts
- Steel Castings





ITEM	FORGED FLANGES	Size Range	Pressure Rating
	Slip On, Weld Neck, Blind, Socket Weld, Screwed, Lap Joint, Reducing Type.	1/2" To 60"	150, 300, 600, 900, 1500, 2500 lbs
	Orifice Flanges Complete with Taping, without JACK SCREWS.	1/2" To 48"	150, 300, 600, 900, 1500, 2500 lbs



Dimension Standards :

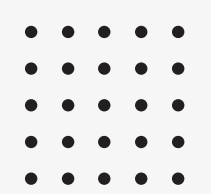
ANSI B 16.5, B 16.1, B 16.47 Series 'A' and 'B', MSS SP-44, JIS SK, 10K, 16K, DIN, BS 4504 or any other as per customer's requirements.

Material Grades :

ASTM A-105, ASTM A-350 LF-2, A182 F-304/F-304H/F-304L/ F-316L/ F-321/ F-347/F-316Ti, A 181 F-1/F-5/F-11/F-22, ASTM A182 F-5/F-9/F-11/F-22, AISI 304/410/420/3042 or any other IS, DIN, JIS or international standards in Carbon/ Alloy/ Stainless Steel.



"Regular products" listed are manufactured in UAE by our trusted channel partner in their modern plant.



REGULAR PRODUCTS



FORGED FLANGES



SPECTACLE BLINDS



WIND MILL GEARBOX FORGING



STEEL CASTING



NON STANDARD FORGING



VALVE BODY & BONNET

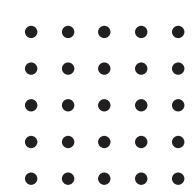


FORGED ROUNDS



PRECISION COMPONENTS

"Regular Products" satisfy the required approvals by leading UAE based Oil & Gas and Petrochemical clients



OUR AWARDS



AWARD FOR LONG TERM ASSOCIATION WITH CUSTOMER



AWARD FOR LONG TERM ASSOCIATION WITH CUSTOMER



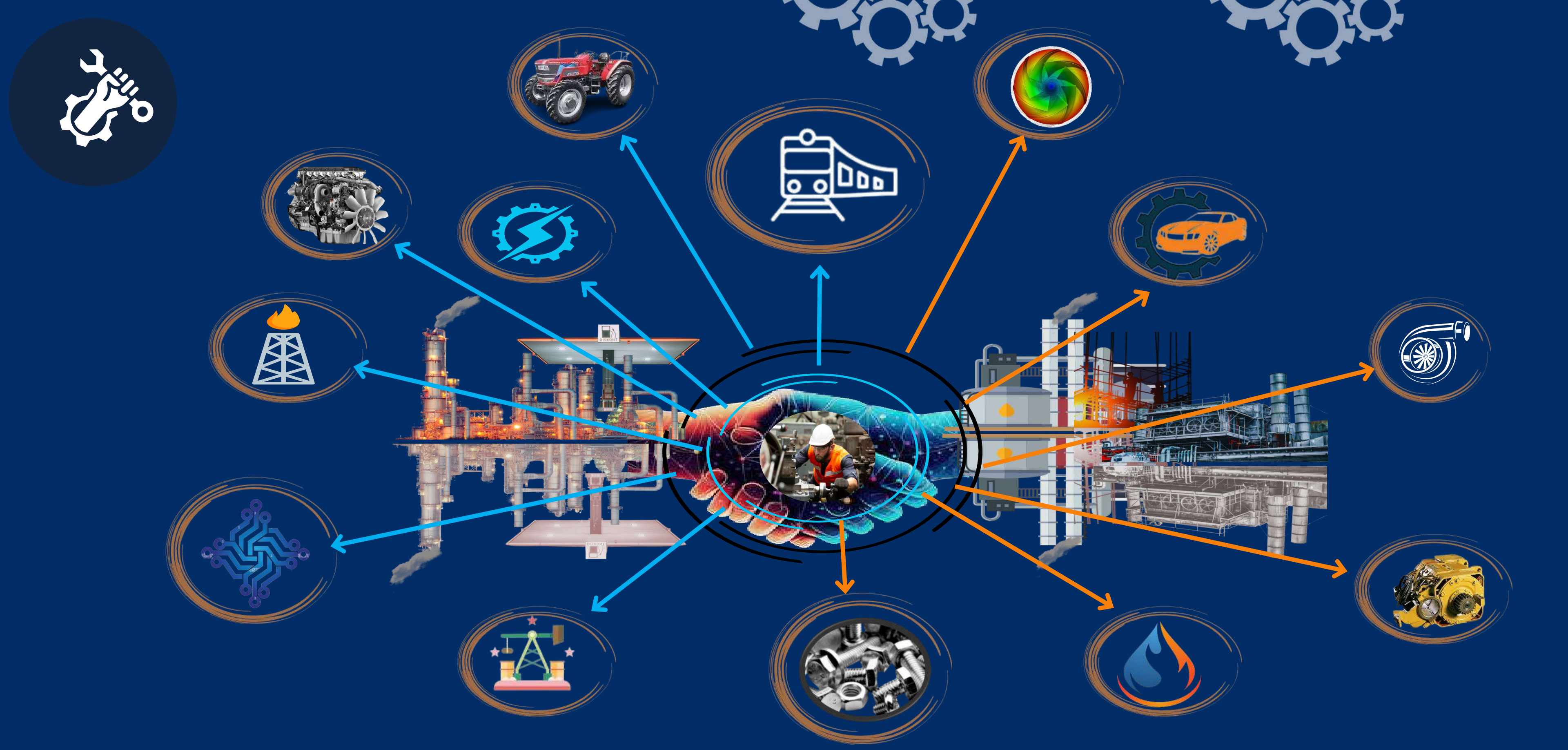
AWARD FOR LONG TERM ASSOCIATION WITH CUSTOMER



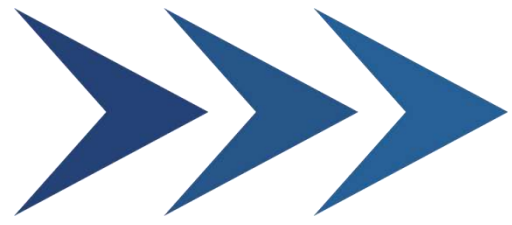
AWARD FOR LONG TERM ASSOCIATION WITH CUSTOMER

We are at our customer's side, as their partner-in-progress as one Team





SHREE BALAJI ENGINEERS
The diamond edge in precision



THANK YOU



Plot no. 85B, Sector A, Industrial Area, Mandideep,
Bhopal, Madhya Pradesh-462046, INDIA.

Tel. +91 9806644396/8839850592/9713070161

W: www.sb-engineers.com E: rishijhalani@sb-engineers.com

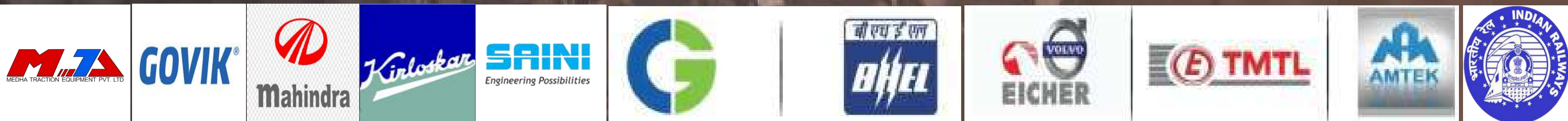
Overseas inquiries:

E: exports@sb-engineers.com

Tel. +91 73561 59591

24x7 customer support @Tel. +91 9806644396

OUR OEM PARTNERS



At our customer's service, 24x7 always, all the way